

**CLIENT**

**PREM PRAKASH  
TEMPLE**

**LOCATION:**

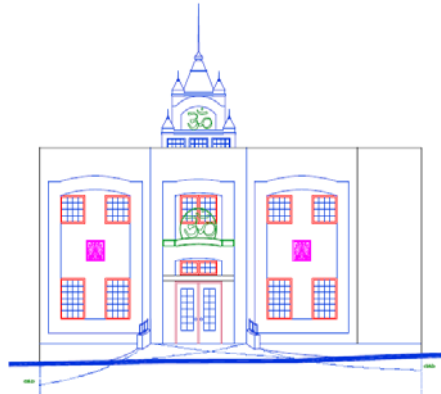
Staten Island, NY

**CONSTRUCTION VALUE:**  
\$2 Million

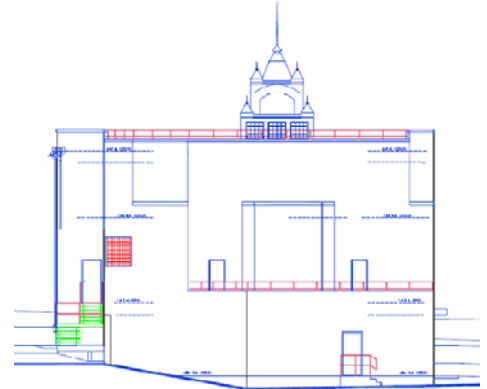
**DESIGN START:**  
2001

**DESIGN COMPLETE:**  
2002

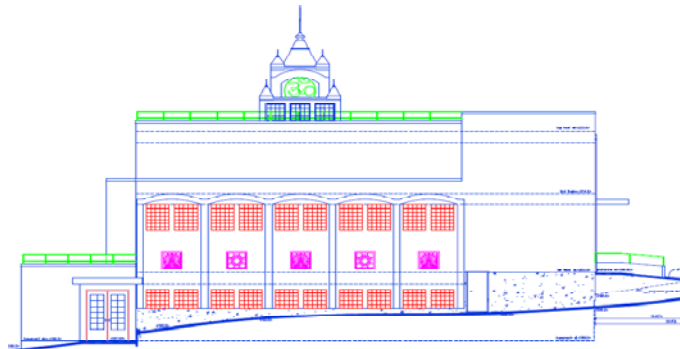
**CONSTRUCTION  
COMPLETE:**  
2002



Front Entrance Elevation



Rear Elevation



Elvin Street Elevation

**SCOPE OF WORK**

Design new MEP systems for 8,000 sq. ft. Temple

**PROJECT DESCRIPTION**

Prem Prakash Temple is a new 8,000 square foot temple in Staten Island, NY. Temple was designed by Grushkin Associates Architects. A&J Consulting designed new MEP System for this temple. MEP design includes HVAC, electrical, plumbing and fire protection systems.